

THE *Southwestern*

A SOUTHWESTERN ELECTRIC COOPERATIVE MEMBER MAGAZINE

SEPTEMBER 2021 • VOLUME 73 • ISSUE 9

ON THE BALLOT

CAST YOUR VOTE
EARLY TO RECEIVE
A \$50 BILL CREDIT

FROM THE CEO

NEW BILL FORMAT
WILL OFFER MORE INFO

EV CHARGER
REBATES

HOMESERVE
ASSURANCE

WEATHERIZE
YOUR HOME

MEMBER MAIL
& PHOTOS

INSIDE THIS ISSUE

03 From The CEO

How much do you pay for energy? What does it cost to move electricity across the grid to your home? The line item layout on our new bill will show you.

04 COVID-19 Response

Southwestern's Greenville office is open and available to members who'd like to conduct business in person.

05 Member Mail

When Mike and Ruthie Whitelaw installed a solar array at their home in Troy, the process didn't unfold according to plan — but Southwestern's cogeneration commissioning team was there to assist them every step of the way.

06 Annual Meeting 2021

Following protocols set in 2020, this year's annual meeting is designed to help you participate in the co-op's democratic process as safely as possible. Vote early to earn a \$50 bill credit.

07 Residential Charger Rebates Available

Southwestern Electric is offering a \$200 bill credit to the first 50 members who install new Level 2 EV residential chargers. All brands are eligible.

07 Technology Rebates

Installing energy-efficient smart technology? You may be eligible for a Southwestern Electric rebate.

08 Home Assurance

Southwestern has partnered with HomeServe to help you protect your finances from unexpected repairs to your home's electrical system.

12 Members in Focus

You'll find blueberries with dew, sunshine in bloom, birds big and small, an autumn sky and fireworks on the Fourth of July in this edition of our member photo feature.

14 Energy & Efficiency

With autumn just weeks away, it's time to button up your home's winter coat.

15 Steps to Solar

Thinking of connecting a solar array to Southwestern's distribution system? Here's our at-a-glance guide to solar commissioning.

16 Health & Safety

School's in session — which means it's time to review campus fire safety with your college student. While you're at it, perform a home safety check.

18 Out & About

Trenton's Northland Nature Preserve provides an easy-to-access outdoor oasis tucked between quiet cul-de-sacs and U.S. Highway 50.

20 Who-What-Where?

This month we reveal the purpose of an antique tool and challenge you to identify a location that could have been in pictures.

22 Co-op Kitchen

Looking for sides with picnic potential? We're mixing up salads in the co-op kitchen.

24 Current Events

Enjoy live music in Litchfield and Maryville, works of art in Staunton and Highland, a Beatles music festival in Worden, all things Italian in Collinsville, and marvel as hot air balloons take to the skies over Marine.

27 Final Frame

Slot machine.

On Account: We've hidden a member-account number in this issue (mailing label excluded). If the account number belongs to you, contact us within 30 days and we'll take \$25 off your electric bill. Good luck!

CO-OP REMINDERS

Now - September 10
Early voting available (see page 6 for details).

September 6
Offices closed for Labor Day.

September 11
83rd Annual Meeting of Members. Voting available 9 a.m. - 10 a.m. at the Bond County Fairgrounds in Greenville and Southwestern's St. Jacob and St. Elmo facilities.

September 13
No payments will be processed from midnight to 4 a.m., while we perform system maintenance. We will resume processing payments at 4:01 a.m.



ON THE COVER

Linda Haberer, cashier/receptionist, guides a member through registration at the co-op's St. Jacob warehouse in August 2020. Haberer retired last September after 22 years of service. You can earn a \$50 bill credit by registering to vote in the 2021 director election. Learn more on page 6.

FROM THE CEO

I'd like to thank Chris Burcham of Troy for the letter that prompted this month's column. Chris asked an excellent question regarding cogeneration reimbursement rates and the costs associated with moving power across the grid.



At the outset of our cogeneration program, we made one point clear — we wouldn't ask our membership to subsidize cogeneration projects. So when a member's solar array produces more energy than their account uses in a month, they're credited at the co-op's avoided cost — the rate we pay for wholesale power — which is currently 3.770 cents per kilowatt-hour. Essentially, the cogeneration credit, as it's called on the bill, reimburses a member for what they contribute to the grid: energy.

The cogeneration credit does not reflect costs associated with moving power across long distances or the delivery of energy through the cooperative's 3,500 miles of power lines. While those costs are included in your bill, they're hard to see. Many of the costs associated with getting energy from a power plant across the grid and to your home are bundled into a single line on your bill. Although they aren't individually identified, those expenses show up in our retail rate of 11.7454 cents/kWh.

That's about to change.

Early next year, we're going to provide you with a more detailed, informative bill. It will break out our cost of service, line by line. At a glance, you'll see how much you pay for energy, distribution, transmission, and other expenses associated with moving electricity from the grid to your home. The information will help you make informed decisions about energy-related technology, and if you're considering cogeneration, assess your potential return on investment.

If the details don't interest you and you're simply looking for the bottom line, you'll find it right where it should be.

We'll share an example of our new bill layout in the November issue of *The Southwestern*. Meanwhile, if you have a question about our new bill or any aspect of Southwestern Electric Cooperative, please feel free to email me at bobby.williams@sweci.com. If I answer your question in my column, you'll receive a \$25 credit on an upcoming bill.

We have a line for that.

Thanks for reading — and stay safe out there.

Bobby Williams, CEO

bobby.williams@sweci.com

Ask The CEO

Have a question for the CEO? Email bobby.williams@sweci.com or write to Bobby Williams at Southwestern Electric Cooperative, Inc., 525 US Route 40, Greenville, IL. Periodically, we'll print some of your questions with his replies in *The Southwestern*. Each member who submits a question will be entered in a drawing for a \$25 bill credit. We'll draw a name each time we run an "Ask The CEO" Q&A segment in the magazine.



525 U.S. Route 40, Greenville, IL 62246.
Phone: (800) 637-8667. Office Hours:
Monday-Friday, 8:00 a.m. - 4:30 p.m.
Visit us on the Web at www.sweci.com.

Board of Directors

Ann Schwarm, President Loogootee
Sandy Grapperhaus, Vice President .. Collinsville
Annette Hartlieb, Secretary Vandalia
Jerry Gaffner, Treasurer Greenville
William "Bill" Jennings Alhambra
Sandy Nevinger Greenville
Jared Stine St. Elmo
Marvin Warner Pocahontas
Ted Willman Greenville

CEO

Bobby Williams Chief Executive Officer

The Southwestern

Joe Richardson Editor
e-mail: joe.richardson@sweci.com
Mike Barns Art Director
e-mail: mike.barns@sweci.com
Nathan Grimm Media Specialist
e-mail: nathan.grimm@sweci.com

Satellite Locations:

St. Jacob Office
10031 Ellis Road, St. Jacob, IL 62281

St. Elmo Distribution Center
2117 East 1850 Avenue, St. Elmo, IL 62458

Southwestern Electric Cooperative reserves the right to re-print member comments and correspondence in its cooperative educational and promotional materials.

The Southwestern (USPS 612-500) is published monthly by Southwestern Electric Cooperative, Inc. Periodical postage paid at Greenville, IL. Subscriptions cost \$8.85 per year. Comments or questions regarding material in this publication may be mailed to Joe Richardson, editor of *The Southwestern*, c/o Southwestern Electric Cooperative, Inc., 525 US Route 40, Greenville, IL 62246, or e-mailed to joe.richardson@sweci.com.

Postmaster: Send address corrections to *The Southwestern*, 525 U.S. Route 40, Greenville, IL 62246.

Apple and the Apple logo are trademarks of Apple Inc., registered in the U.S. and other countries. App Store is a service mark of Apple Inc. Android, Google Play and the Google Play logo are trademarks of Google Inc.

Follow us at facebook.com/SWECI & twitter.com/sweci and search for Southwestern Electric on YouTube.



Coronavirus Response

Greenville Office Open to Members; St. Jacob Lobby Closed

Both the lobby and drive-up window of Southwestern Electric’s Greenville office are open and available to members who’d like to conduct business in person.

“Conditions in our area improved to the degree that we felt comfortable conducting business in our offices,” said CEO Bobby Williams, noting the co-op opened its doors to members June 14. “That said, we’re fully aware of rising COVID rates in some regions. We’re watching conditions and monitoring reports from state and local health departments and the CDC. Our top priority is the health and safety of our employees and members. So we expect everyone — employees and members alike — to wear a mask while they’re in the building.”

Williams said the cooperative’s St. Jacob lobby and walk-up window will remain closed. “In recent years, we’ve seen a marked decline in office visits at St. Jacob. Our Madison County crews will continue to operate from our St. Jacob building,” Williams said, “but we’re permanently closing the lobby and walk-up window.”

The St. Jacob drop box will remain open and available.

Southwestern’s decision to open the Greenville office coincided with Illinois’ plan to fully open the state. In early May, Gov. J.B. Pritzker announced plans to enter Phase 5 of the state’s COVID reopening plan. Gov. Pritzker’s plan called for fully opening all sectors of the economy and eliminating capacity limits on June 11.

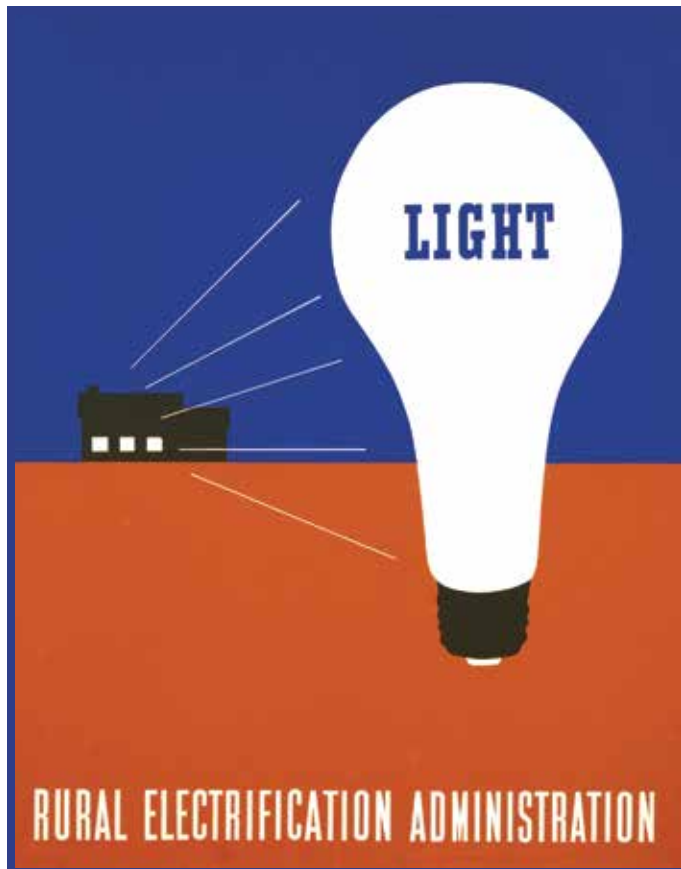
“We’re optimistic conditions will

allow us to keep the Greenville office open to our members,” Williams said.

In March 2020, Southwestern Electric took precautions to safeguard the health of employees and members and curb the spread of COVID-19. Protective measures included closing offices to visitors, adopting CDC health and safety guidelines, observing social distancing protocols, wearing face coverings when appropriate, and reviewing safety measures with employees.

Members may continue to manage their accounts, report outages and make payments using the co-op’s online payment portal, by using the SWEC IL app, or by calling the cooperative at 800-637-8667.

For the latest information, see our social media channels or go to www.sweci.com.



Remember When?

Do you remember when the lights came on?

When the poles went up and the lines came through?

If you weren't there, did you hear stories from your parents or grandparents about the days before electricity lit our way? We're interested in hearing about the early days of electrification. We'd like to know how electricity changed life in your home, on your farm, or at your school.

Please send your stories to Joe Richardson at joe.richardson@sweci.com or via traditional mail to: 525 US Route 40, Greenville, IL 62246.

MEMBER MAIL

I wanted to take this opportunity to pass on some comments and praises about some of your staff at Southwestern Electric.

I contacted Julie Lowe about a year ago to find out exactly what we would need to do if we decided to proceed with a solar panel purchase. She provided all the information I needed to know about our requirements.

In August 2020, we contracted with PowerHome Solar to install solar panels at our residence in Troy. They didn't actually start to install the panels until January 11, 2021. I notified Julie that they were beginning the install and to make sure she had everything she needed. She indicated she did and then answered my many questions about what we were getting into. She was so knowledgeable and helpful from the start and said as soon as the Madison County inspector approved it, she would put us on the schedule.

Unfortunately, our two-day install didn't get done in two days, but about a week later another crew came out and completed the work. We still had to wait for the Madison County inspector.

I connected with Julie, with a copy of the completed inspection and confirmation from PowerHome, and within a week she had us scheduled for commissioning on Feb. 12, 2021.

Another unfortunate event occurred when they got here and realized that PowerHome had not installed the shutoff next to the meter, per the plan, so she couldn't proceed.

We immediately contacted the company and Julie contacted

her point of contact at PowerHome to see if they could help get this remedied. Long story short, it took three more visits from PowerHome to get it right.

Julie stayed in contact with me with each visit in the hopes that she would be able to schedule the commissioning. The last crew finally fixed it on Sunday, March 14, 2021 and I sent Julie an email. She immediately responded on Monday morning saying that while the weather wasn't looking too good, she would work to get us on the schedule. Within an hour, working with her commissioning crew, she told us they would come Tuesday afternoon. Like clockwork they arrived, checked it all out, switched out the meter and commissioned the system.

I know this is a long message but I can't begin to tell you how much working with Julie Lowe really gave me peace of mind during a very frustrating experience with PowerHome. She couldn't control what PowerHome was doing but she was ready to respond once she got the all clear. She was apologetic for all the trouble we were having with PowerHome and that certainly wasn't her fault, and she stayed connected with her point of contact at the company as well. You have an excellent employee who exhibits great customer service, is professional and very courteous.

Also don't want to miss passing kudos to the crew who checked the system out and walked us through the instructions. I didn't catch their names but Southwestern Electric is fortunate to have these types of individuals on their team.

Please pass our many thanks on to them.
— Mike & Ruthie Whitelaw, Troy



The Southwestern Electric cogeneration commissioning team assisting Mike and Ruthie Whitelaw included (l-r) Chris Schmid, lineman/polyphase meterman & tester, Scott Fitzgerald, foreman/polyphase meterman & tester, and Julie Lowe, energy manager for Southwestern Electric Cooperative.

Annual Meeting 2021

Focus on Safety Prompts Early Voting Options and Return to Fairgrounds

Amidst continuing concerns regarding COVID-19, this year's annual meeting is designed to encourage social distancing and allow members to participate in the cooperative's democratic process as comfortably and safely as possible.

Southwestern Electric Cooperative's 83rd Annual Meeting of Members will be held at the Bond County Fairgrounds in Greenville again this year. Like last year, the meeting will be offered in a drive-through or pull up and park format. Members may vote and leave or vote and pull into a parking area to await the president's address, CEO report and election results.

Attendees will be asked to remain in their vehicles for the duration of their

stay. The meeting will be broadcast through a short-range FM transmitter, and attendees will listen on their car radio.

To expedite voting, members are asked to bring the registration card printed on the back cover of the July or August issue of *The Southwestern*. The cards are identical and either card will do.

To more effectively practice CDC recommended health guidelines and help ensure member and employee safety, the co-op is encouraging members to vote before the day of the meeting.

Members will earn a \$50 bill credit by presenting their preprinted registration card and voting before Sept. 11. Voting schedules appear below.

In addition to creating an environment which encourages social distancing, the co-op will limit interpersonal contact at this year's meeting. Southwestern Electric will not serve meals, offer attendance gifts, hold prize drawings, play BINGO or put on a carnival. There will be no drawings for cash prizes or a year of free electricity.

This year, registration will open at 9 a.m. At 10 a.m., Ann Schwarm, president of Southwestern Electric Cooperative, and CEO Bobby Williams will deliver their reports. Election results will follow.

Questions or comments regarding the meeting may be directed to Susan File, vice president of member services, at (800) 637-8667 or susan.file@sweci.com.

Voting Schedule

Members may cast their votes for board candidates in the 2021 election at the times and locations listed below.

\$50 bill credit with registration card, \$40 bill credit without registration card

Greenville office	525 US Route 40, Greenville, IL 62246	Aug. 27 – Sept. 10 from 8 a.m. – 4:30 p.m. Sept. 1 & Sept. 9 voting extended to 7 p.m.
St. Jacob warehouse	10031 Ellis Road in St. Jacob	Aug. 31 & Sept. 8 from 4 p.m. – 7 p.m.
St. Elmo warehouse	2117 East 1850 Avenue in St. Elmo (frontage road at the I-70 St. Elmo exit)	Sept. 2 & Sept. 7 from 4 p.m. – 7 p.m.

Members must bring the registration card from the back cover of the July or August issue to receive the additional \$10 bill credit.

\$30 bill credit with registration card, \$20 bill credit without registration card

Bond County Fairgrounds, St. Jacob & St. Elmo warehouses	<i>Annual Meeting Day, Saturday, Sept. 11, 9-10 a.m.</i>
---	--

Members must bring the registration card from the back cover of the July or August issue to receive the additional \$10 bill credit.

Commercial and inactive members, please note the following:

Commercial Memberships

Commercial (business) members are advised that any representative wishing to vote will be asked to present satisfactory evidence that this person has been assigned to act as an agent of the business. A commercial member, just like any other, is entitled to a single vote in cooperative elections.

Inactive Memberships

Only active members of the co-op are eligible to vote in the election.



RESIDENTIAL CHARGER REBATES AVAILABLE

Southwestern Electric Cooperative is offering a \$200 bill credit to the first 50 members who install new Level 2 electric vehicle (EV) residential chargers. All brands are eligible.

The rebate is part of Southwestern Electric's EV Pilot Program — an initiative launched in October 2020 that will help the co-op identify energy demand and usage patterns among EV owners and develop EV-oriented incentive rates.

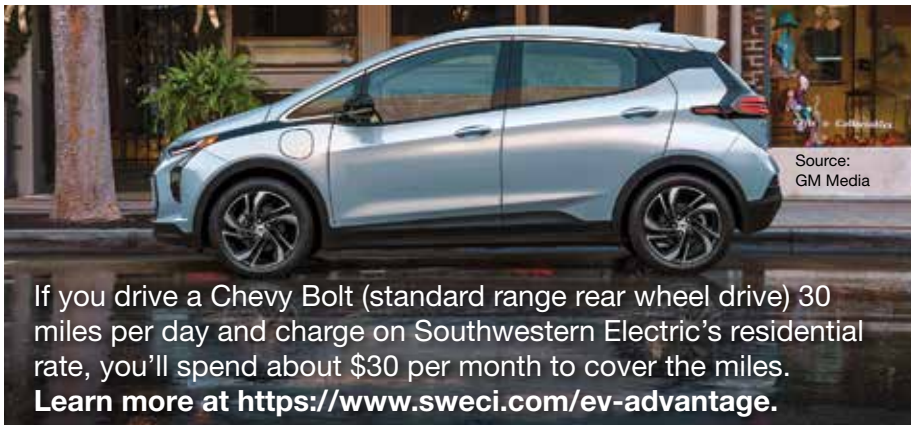
Rates will be structured to reward EV owners, with margin enough to fund infrastructure improvements.

Until incentive rates are in place, EVs will charge at a member's existing electric rate. The co-op's immediate goal is to make electric vehicle ownership an attractive option, encouraging higher EV adoption rates among members.

"More EVs mean more power sales," said Julie Lowe, program coordinator. "We can use that revenue to fund more infrastructure improvements while keeping our rates in check."

Southwestern Electric will establish incentive rates and prime charging hours later this year.

For more information, contact Julie Lowe at 800-637-8667 or julie.lowe@sweci.com.



Source:
GM Media

If you drive a Chevy Bolt (standard range rear wheel drive) 30 miles per day and charge on Southwestern Electric's residential rate, you'll spend about \$30 per month to cover the miles. **Learn more at <https://www.sweci.com/ev-advantage>.**

FIND US ON SOCIAL MEDIA

For the latest news and notes, follow us on facebook and twitter. You'll find us at facebook.com/SWECI and twitter.com/sweci. Search for Southwestern Electric on YouTube.



Co-op Offers Rebates for High Efficiency Heat Pumps, Electric Water Heaters, Smart Thermostats

Our rebate program will help you save money on the replacement or new installation of air source heat pumps, geothermal systems, electric water heaters and smart thermostats.

Members are eligible for one rebate per category per year. All rebates will be applied as a bill credit upon receiving the completed rebate application and proof of purchase.

Rebate forms are available on our website at sweci.com. You can email your completed application and proof of purchase to julie.lowe@sweci.com, or mail it to: Julie Lowe, 525 US Route 40, Greenville, IL 62246. You're also welcome to drop off your materials at our Greenville office.

Questions? Contact Julie Lowe at 800-637-8667 or julie.lowe@sweci.com.



Home Service Repair Plans Offer Assurance, Quality and Convenience

We've all experienced home mechanical and system failures. When breakdowns involve exterior home electrical lines, members sometimes call Southwestern to request repairs. Many members understandably assume all electrical lines outside their home are owned by the cooperative. But components that connect a member's home to the cooperative's distribution system — elements like the weather head, insulator, riser, meter base or loop, and service entrance conductor — are owned by the member.

When those elements fail, you find yourself facing bills you hadn't budgeted for. If the issue is related to aging parts and normal wear and tear on the system, your homeowners insurance may not cover the cost of repairs. That's why Southwestern partnered with HomeServe USA, an independent provider of home repair service solutions. HomeServe offers home service repair plans that protect a homeowner's budget from sudden, often significant expenses that come with water, sewer, electrical and heating and cooling home emergencies. Their external electrical line plan will pay for repair or replacement of items that your homeowners insurance may not cover when the components fail due to normal wear and tear.

If something goes wrong with a system or appliance covered by a HomeServe repair plan, the member can call HomeServe anytime, 24/7, at (833) 334-1874. The company will dispatch

a pre-screened, local repair technician to the member's home to diagnose the problem. The technician will fix the issue or replace the covered item as detailed in the home repair plan.

HOW HOMESERVE HELPS

HomeServe is available to take emergency repair calls around the clock.



Technicians dispatched through HomeServe are local, licensed and insured. Their work is covered by a one-year HomeServe guarantee.

HomeServe lessens the financial burden of unexpected breakdowns by paying the bill on covered repairs up to the benefit amount, and eases the stress and inconvenience that comes with the event. You don't have to research repair bids or vet and hire a technician.

And if the work doesn't measure up to your expectations? HomeServe will work to address the issue as quickly and comprehensively as possible.

HELPING US HELP YOU

Southwestern has partnered with HomeServe to offer home service repair plans as an optional member service. No one is obligated to buy a plan. Southwestern recommends that members interested in a plan speak with their insurance agent before buying, to make sure the terms and conditions listed in the plan aren't already addressed by your homeowners policy.

HomeServe will return a portion of the proceeds from plan sales to Southwestern Electric. The funds will be dedicated to support programs and projects like the cooperative's Power For Progress Scholarship Program.

You can read more about HomeServe at www.HomeServe.com and view nearly 100 informational videos on HomeServe's YouTube channel.

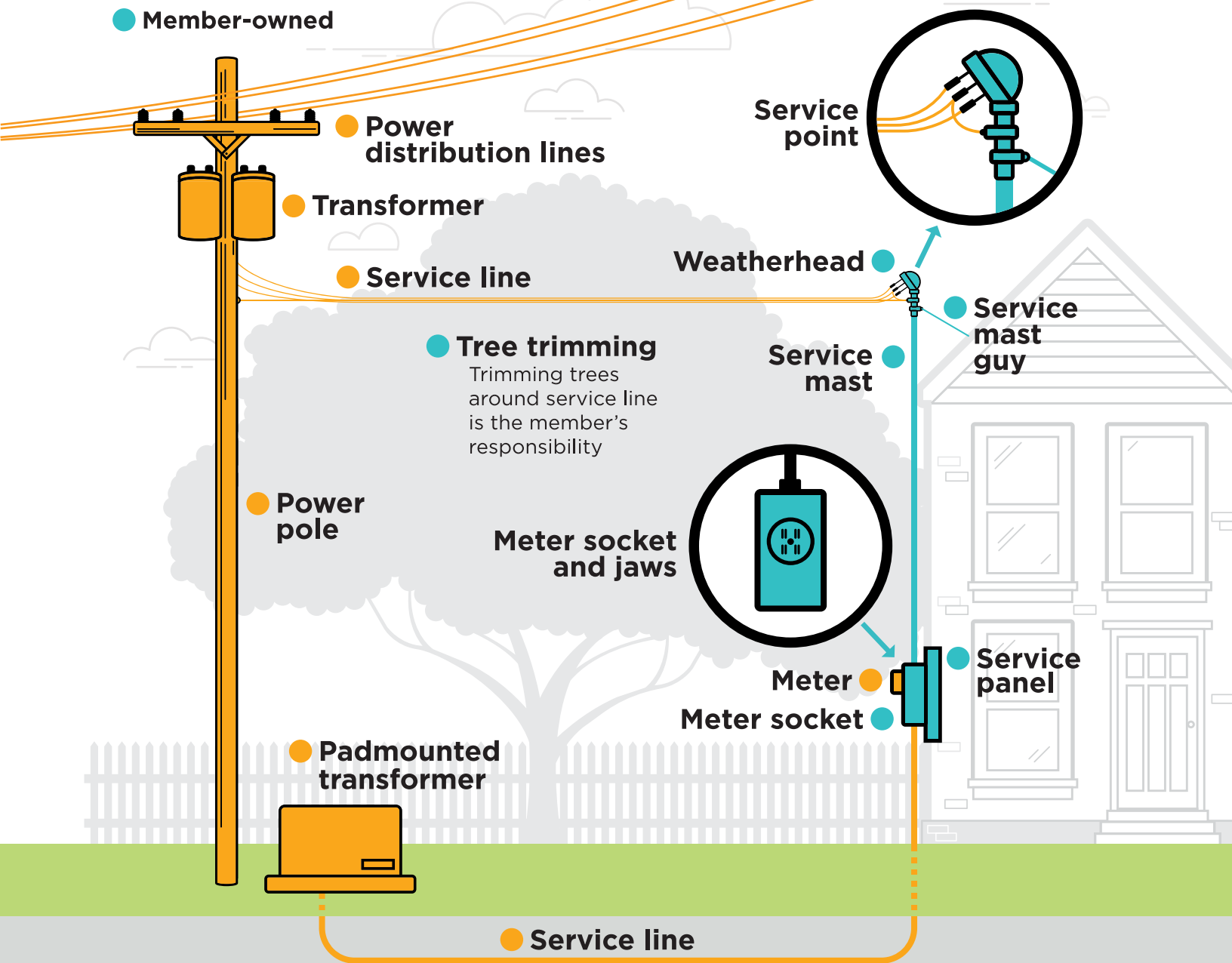
Photos courtesy Modern Fotographic by Dave Noonan

Who Owns What?

Electric Co-op Owned Equipment vs Member-Owned Equipment

This graphic depicts equipment owned by the co-op (in gold) and the member (in blue). If a storm damages any equipment owned by the co-op, we are responsible for repairs. If a storm damages any member-owned equipment, the member is responsible for repairs. Repairs to member-owned equipment should be performed by a licensed electrician.

- Co-op owned
- Member-owned



Note: This graphic depicts overhead and underground service. Please be aware of which type of service you receive at your home or business.

Purchase Power Day By Day With **Pay-As-You-Go** Option

Pay for the power you need as you need it — that’s the idea behind Southwestern Electric Cooperative’s Pay-As-You-Go program. “Most members are billed for power a month at a time. The power they’ve used during the last month is what they pay for,” explained Susan File, vice president of member services for Southwestern Electric Cooperative. “With our Pay-As-You-Go program, you only pay for the power you need at the time, and you can add more money to the account whenever you want to.”

File said the Pay-As-You-Go Program is perfect for families who want to control precisely how much of their budget they put toward electricity.

“Our main goal is to help our members use less power, and forego paying a deposit and reconnection fees,” she pointed out. “Studies have shown that households typically experience a 12 percent drop in energy use after switching to this type of program.”

Pay-As-You-Go allows the accountholder to purchase electricity at his or her convenience. Payments appear as credits on the member’s account. The balance, which reflects energy used and payments made over the past 24-hours, is updated daily. There’s no penalty for allowing funds to run out, but electric service becomes subject to disconnection



when the account balance reaches \$0.00.

The cooperative doesn’t mail a monthly bill to Pay-As-You-Go accounts. Rather, participating members monitor their account balance via the cooperative’s online billing system, SWEC IL app or in-home display. In addition to checking their account balance and payment history, the member will have access to an assortment of tools for tracking their energy consumption, including a breakdown of their kilowatt-hour usage and money spent on power each day.

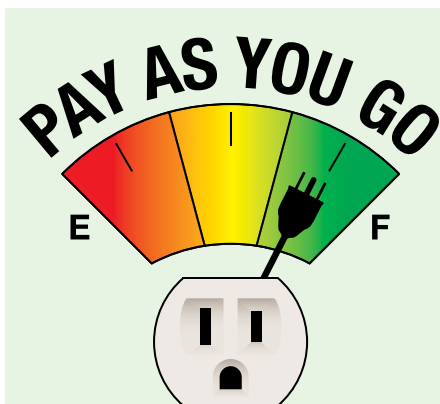
Southwestern also offers an in-home display unit (at no charge), particularly for members who don’t have Internet

access. The online billing system, app and in-home display allow the accountholder to view their present account balance and average daily usage.

“The member has to keep an eye on their remaining balance with this type of program, but we also have a couple of systems in place to let them know their account’s status,” said File. “The in-home display sounds an alarm when the account reaches a minimum dollar amount. We can also send the member a reminder message by telephone, text and e-mail if we have a valid phone number or e-mail address on file for their account.”

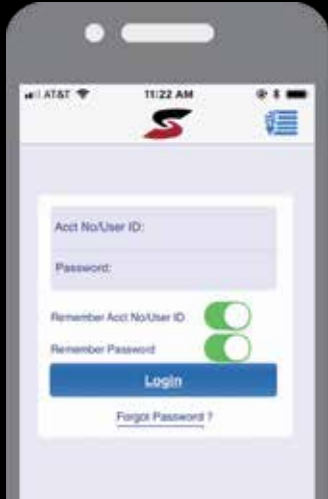
Payments on a Pay-As-You-Go account can be made at the cooperative’s Greenville office during regular business hours, at the Vandalia Farm Bureau, or deposited in the dropbox at Southwestern’s St. Elmo and St. Jacob offices. Payments are also accepted 24/7 by phone, SWEC IL app and online at sweci.com. Most payments will post to the member’s account within an hour. However, members should allow three day’s processing time when payments are made at the St. Elmo or St. Jacob offices or Vandalia Farm Bureau.

For more information on our Pay-As-You-Go program, visit sweci.com or call (800) 637-8667 to speak to one of our member services representatives.



- Take control of your energy usage.
- No credit checks or security deposits.
- No fees for late payment or reconnection of service.
- Say goodbye to paper bills.

REPORT YOUR OUTAGE IN SECONDS WITH THE SWEC IL APP



1

DOWNLOAD THE APP

Download the app free on Google Play™ or from the App Store®. Enter your account number and password.

Don't have a password?

Create one using the My Account tab at sweci.com.

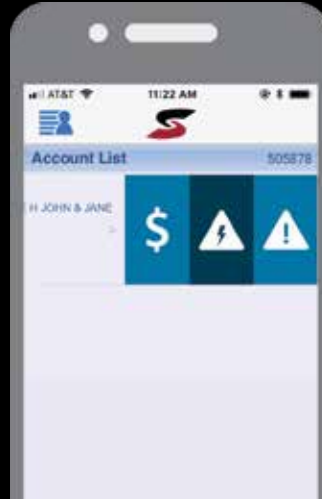


2

SWIPE

Swipe your account info

Swiping left across your account information will reveal three icons.



3

TAP

Tap the center icon

Tapping the center icon (the lightning bolt in a triangle) will take you to the outage reporting screen.



4

TYPE

Tap *Report an Outage*

Make sure the **Confirm Power Out** slider is activated. This is essential—it's how the app identifies your message as an outage report. Then tap **Report an Outage**. And that's it. The app will notify us that your account is without power.

Only Tap *Report an Outage* When You're Ready to Report

When you tap **Report an Outage**, your notification instantly appears in our dispatch center. There's no prompt asking you to confirm your information, and no option to recall the message once you've sent it. The app makes outage reporting fast and easy—which is exactly what you're after when the lights are out.

More Than One Account?

If you have more than one account, the app will present each of your accounts on the Account List screen. When you need to report an outage, swipe left across the account that's without power. If more than one account is affected, repeat the process for each account.

If you'd like our automated system to call you when power is restored, enter your phone number and activate the **Request for Callback** slider. You can send comments by typing them in the Comments area. You'll want to take care of those items before you hit the **Report an Outage** button.

After you've successfully registered your outage, the app will indicate your account is without power.



View our app tutorials. Search for Southwestern Electric Cooperative on YouTube.

MEMBERS IN FOCUS

Photos allow us to capture and recall a moment. In pictures, we relive a laugh, a smile, a winter snow or summer sun.

Members In Focus is your invitation to share those saved moments with members of Southwestern Electric.

In these pages, you can open our eyes to the people and places that mean the most to you. This is your opportunity to introduce *Southwestern* readers to everything that makes your corner of the world an exceptional place to live, work and play.

Send us your shots of life in Southwestern Illinois. We'll publish some of our favorite photos from time to time in our Members In Focus section. Your subject needn't be on Southwestern's lines. If you've taken a great photo, and you shot it on the Highland town square instead of the Brownstown back forty, send it. We'd love to see it.

Submission Guidelines

Please include your name, address, phone number or e-mail address, and a brief description of the photo. We'd like to know when and where it was taken, what we're seeing, and the names of any people in your shot. Digital images must be taken in high-resolution JPG or TIF format (300 DPI or greater) — and make sure the date/time stamp is turned off before you shoot.

Digital images may be sent as e-mail attachments or on a CD. Prints are also welcome. Send photos by e-mail to joe.richardson@sweci.com or by mail to The Southwestern, 525 US Route 40, Greenville, IL 62246.

If you're sending prints, please make sure they're copies you don't mind parting with, as we won't be returning them.

Southwestern Electric Cooperative interprets all submissions as unconditional permission to use the photos provided. We also reserve the right to not use photos.

Finally, if you're submitting a shot, it needs to be *your* photo — shot by you. Questions? Contact Joe Richardson at joe.richardson@sweci.com or Mike Barns at mike.barns@sweci.com, or call 800-637-8667.



Jennifer Neuber of Troy shot this bold and beautiful photo of a sunflower in bloom (above) in Mascoutah, Ill.

Makenzie Lievers, daughter of Southwestern members Jeff and Paula Lievers of Worden, froze a hummingbird in flight in the front yard of her parents' home.



Kay Stoecklin made this striking shot of dew-covered blueberries on her orchard southeast of Donnellson.



Ken Suhre captured the magnificent colors of an autumn sunset last year from his home northwest of Alhambra.



Above: Leisa Nesbit of St. Jacob made these amazing photos of a barred owl — and a precariously perched squirrel — in Greenville earlier this year. Leisa is the wife of Southwestern maintenance foreman Rob Nesbit.



Alexi Hartlieb captured a picture-perfect moment: Fireworks against a darkening sky on her family's farm on the Fourth of July. Alexi is the daughter of Southwestern director Annette Hartlieb and her husband, Dennis. They live southwest of Vandalia.

BE WINTER WISE & Weatherize

IT'S TIME TO BUTTON UP YOUR HOME'S WINTER COAT

by Julie Lowe, Energy Manager

Autumn will soon arrive, bringing relief to overworked home cooling systems across Southwestern Illinois—and winter will be here before you know it. Fortunately, a few simple and inexpensive tasks can help prepare your home for the coming cold.

Plug the Leaks. Sealing leaks with caulk and weather-stripping will keep more warm air inside when it's cold outside. Leaks are most commonly found around window and door frames, recessed lighting installations, pipes, vents and electrical outlets.



Clean Out the Gutters. In winter, clogged gutter drains can form ice dams, which cause water to back up and potentially seep into your house. After trees have shed most of their leaves, make time to clear your gutters. Start by removing leaves and debris, then rinse out the gutters with a hose.

Check the Furnace. Before winter sets in, make sure your furnace is



working properly. You'll have better luck scheduling service before temperatures drop and you're competing with your neighbors for an appointment. Even if your furnace seems to be in good working order, it's a good idea to have it serviced annually. Stock up on furnace filters and plan to change them regularly so your heating system can operate efficiently.

Work on the Windows. Don't let warm air escape through your windows. If you have drafty windows, consider replacing them before cold weather hits. If window replacement isn't in your budget, pick up an inexpensive window insulator kit to provide temporary coverage through the coldest months. Autumn is also a good time to replace temporary window screens with storm windows, which provide an extra layer of protection and warmth.

Protect the Plumbing. Protect your pipes from freezing (and possibly bursting) by turning off the water at the shut-off valve, then turning on your

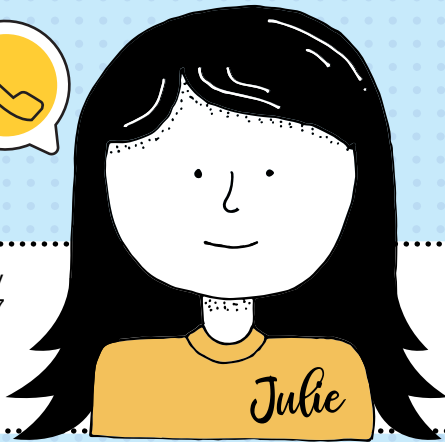
outdoor faucets to let them drain. If you haven't already done so, drain any outdoor hoses and bring them inside. If your home has uninsulated pipes that pass through unheated spaces, wrap them with pre-molded foam rubber sleeves. Not only are outdoor faucets vulnerable—pipes that run through attics, crawl spaces and exterior walls have the potential to burst in subfreezing weather as well.

Reverse the Fans. It may seem strange to run your ceiling fans when there's frost on the ground, but this technique can save money on your heating bills. Most ceiling fans have a small switch that reverses the rotation of the fan blades, pulling air up, instead of propelling it down, to help circulate warmer air that collects near the ceiling.

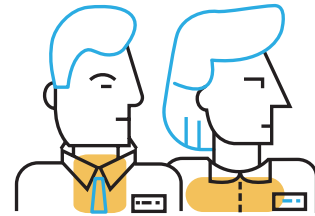
Southwestern Electric Cooperative offers many ideas to help you improve the energy efficiency of your home. For more information, contact Julie Lowe, energy manager, at (800) 637-8667 or julie.lowe@sweci.com.



Steps to Solar Commissioning



Contact Julie Lowe, energy manager, at (800) 637-8667 or julie.lowe@sweci.com for our information and commissioning packet.



Contact your installer and insurance agent. Ask your installer for a one-line diagram. Request a certificate of insurance from your agent. They're welcome to send those documents to Julie Lowe at Southwestern Electric. Or if you'd like to review them, they can send them to you, and you can pass them along to Julie.



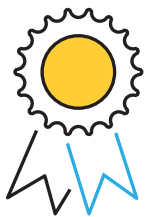
As your installation nears completion, call us. We'll discuss the commissioning timeline. You'll receive a \$500 invoice to cover the installation of your new dual register electric meter, a system inspection, and your array's interconnection to the grid.



After installation is complete, contact us to schedule your system's on-site review and commissioning.



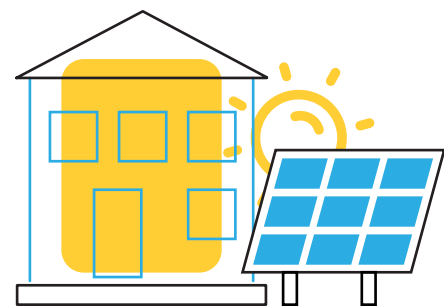
Our commissioning team will visit your site. An engineer will inspect your system to verify it meets our safety specifications. A team member will review a memorandum of understanding with you. You'll sign this document for our files. Note: If you won't be present for commissioning, please schedule a meeting to review and sign the memorandum beforehand. After your system passes inspection, you go live! Your array is connected to Southwestern's distribution system.



We'll send you a certificate of completion, which you'll submit to your installer to receive your solar renewable energy credits, or certificates (SRECs).



Each year, you'll submit documentation to confirm you've renewed your insurance.



Every three years, we'll visit your system to confirm it's connected properly, well-maintained, and that your safety signs are in place.

College Campus Fire Safety

College students living away from home should take a few minutes to make sure they're living in a fire-safe environment. Educating students on what they can do to stay safe during the school year is important and often overlooked.

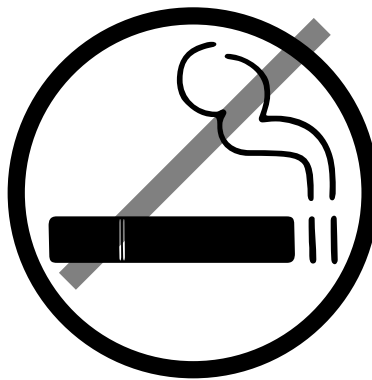


CANDLE CARE

Burn candles only if the school permits their use. A candle is an open flame and should be placed away from anything that can burn. Never leave a candle unattended. Blow it out when you leave the room or go to sleep.

SMOKING SENSE

If you smoke, smoke outside and only where it is permitted. Use sturdy, deep, non-tip ashtrays. Don't smoke in bed or when you've been drinking or are drowsy.



FACTS

- Fires in dormitories are more common during the evening hours, between 5–11 p.m., and on weekends.
- Roughly five out of six fires in dormitories are started by cooking.

SAFETY TIPS

- Look for fully sprinklered housing when choosing a dorm or off-campus housing.
- Make sure you can hear the building alarm system when you are in your dorm room.
- If you live in a dormitory, make sure your sleeping room has a smoke alarm, or your dormitory suite has a smoke alarm in each living area as well as the sleeping room. For the best protection, all smoke alarms in the dormitory suite should be interconnected so that when one sounds, they all sound.
- If you live in an apartment or house, make sure smoke alarms are installed in each sleeping room, outside every sleeping area, and on each level of the apartment unit or house. For the best protection, all smoke alarms in the apartment unit or house should be interconnected so that when one sounds, they all sound.
- Test all smoke alarms at least monthly.
- Never remove batteries or disable the alarm.
- Learn your building's evacuation plan and practice all drills as if they were the real thing.
- If you live off campus, have a fire escape plan with two ways out of every room.
- When the smoke alarm or fire alarm sounds, get out of the building quickly and stay out.
- Stay in the kitchen when cooking.
- Cook only when you are alert, not sleepy or drowsy from medicine or alcohol.
- Check with your local fire department for any restrictions before using a barbecue grill, fire pit, or chimenea.
- Check your school's rules before using electrical appliances in your room.

On Account: If your account number is 46547001, call us within 30 days to receive a \$25 credit on an upcoming electric bill.

Don't Wait — Check the Date!

Replace Smoke Alarms Every 10 Years



Fire Prevention Week
Oct. 3-9, 2021

Age matters when it comes to your smoke alarms.
Check the manufacture dates on your smoke alarms today!

1

Remove the smoke alarm from the wall or ceiling.

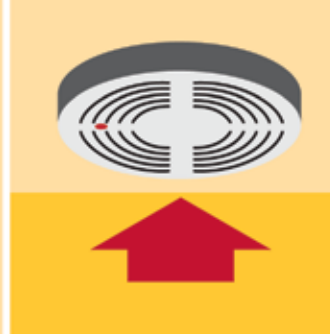


2

Look at the back of the alarm for the date of manufacture.

3

Smoke alarms should be replaced 10 years from the date of manufacture.



4

Put the alarm back on the ceiling or wall if it is less than 10 years old.



A closed door may slow the spread of smoke, heat and fire.



Test smoke alarms at least once a month by pushing the test button.



If the smoke alarm sounds, get outside and stay outside. Go to your outside meeting place.



Install smoke alarms in every sleeping room and outside each separate sleeping area. For the best protection, make sure all smoke alarms are interconnected. When one sounds, they all sound.



Call the fire department from a cellphone or a neighbor's phone. Stay outside until the fire department says it's safe to go back inside.

For more information about smoke alarms, visit usfa.fema.gov and firepreventionweek.org.

U.S. Fire Administration



FEMA



NORTHLAND NATURE PRESERVE

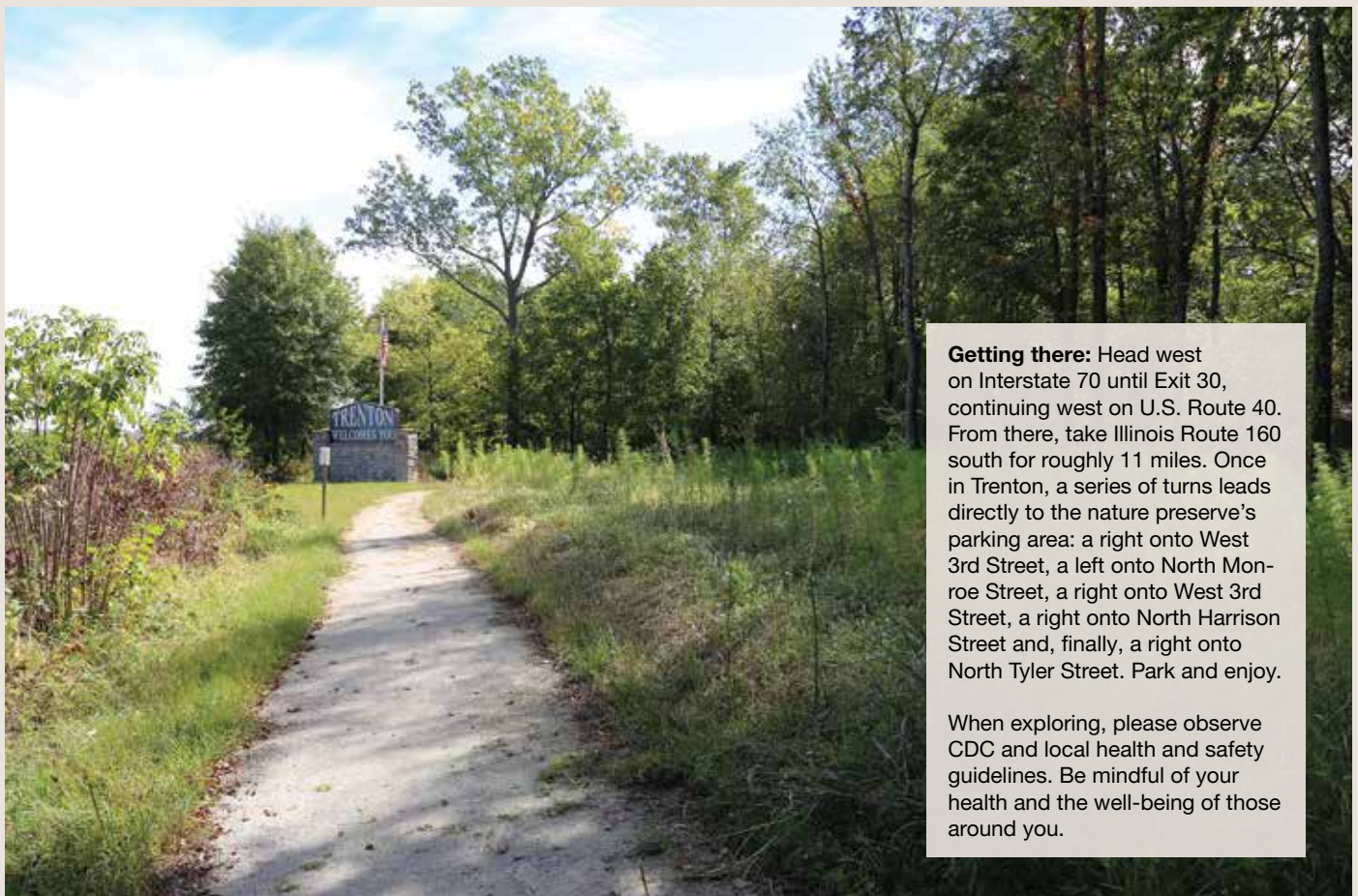
Story by Nathan Grimm | Photos by Mike Barns & Nathan Grimm

Nature preserves often represent, metaphorically, an opportunity to escape from the urban, industrialized world around us.

Northland Nature Preserve takes a more literal approach. To get to the Trenton sanctuary, one must drive through a neighborhood of newly built houses; a stone's throw from the prairie grass growth, U.S. Route 50 bustles with vehicle traffic. Sandwiched between is the preserve, featuring a 0.6-mile gravel trail that loops around a wetland and weaves through wooded areas. Along the trail, various tree types are identified with markers – including bald

cypress, hackberry and red oak, among others – and an informational sign visible from the observation area overlooking the wetland offers further education for inquisitive minds.

A covered picnic area, serviceable restrooms and ample shade make Northland Nature Preserve a good destination for a family outing. So, too, does the trail, which is low-impact and navigable for most able-bodied children and adults. Be sure to pack insect repellent in your day bag, though, as bugs are certainly among the things being preserved in this natural habitat.



Getting there: Head west on Interstate 70 until Exit 30, continuing west on U.S. Route 40. From there, take Illinois Route 160 south for roughly 11 miles. Once in Trenton, a series of turns leads directly to the nature preserve's parking area: a right onto West 3rd Street, a left onto North Monroe Street, a right onto West 3rd Street, a right onto North Harrison Street and, finally, a right onto North Tyler Street. Park and enjoy.

When exploring, please observe CDC and local health and safety guidelines. Be mindful of your health and the well-being of those around you.



Though relatively small in size, Northland Nature Preserve is not short on character. Schedule a visit and see for yourself what's in bloom at the Trenton preserve.

WHO • WHAT • WHERE

Welcome back! In August we broke from our usual format to bring you Southwestern's annual report. There were plenty of people, places and things in the report, but as most of them had captions, identification wasn't much of a challenge. This month, by contrast, we're delivering one of our most difficult puzzles to date.

Can you name the location of this marquee? Does it stand on a quiet country acre in Bond County? Outside a commercial district in Madison County? At the edge of your hometown in Effingham County? Let us know. We look forward to hearing from you.

The letters you're reading today are in response to our June puzzle. Special thanks to Terry Wisnasky of New Douglas for providing the remarkably well-preserved antique that served as our June challenge. Terry dropped by our Greenville office in early August 2020 and patiently braved the heat and humidity while we made photos outside our building. We thoroughly enjoyed meeting him.

We'll share the solution to this month's puzzle in our November issue. Meanwhile, we hope you enjoy the responses to Terry's mystery item.

Thanks to everyone who submitted a solution to our June puzzle — and thank you for reading *The Southwestern*.

.....

I think that the item shown is a shotgun cleaning rod. It looks just like the one my grandfather used to clean his gun after he had been hunting with it. Unfortunately, cleaning solvents eventually destroyed the wood to the point it was no longer usable and it was replaced by a metal one. That item evokes the nostalgia of a bygone era.

—Harry Volberg, *Pocahontas*

The June mystery item is a shaft for cleaning gun barrels. The eyelet on the end is for a small piece of cloth with oil or solvent to remove the residue of burnt gunpowder. I believe my father or grandfather had one similar, made of wood. Mine are either aluminum or fiberglass.

—Bill Weaver, *Altamont*

The item this month is a vintage 1892 Bridgeport (BGI) Shotgun/Rifle cleaning rod. February 9, 1892 is the patent date. The three pieces screw into each other to give it a length of about 35 inches. A soft cloth goes on the very end through the small hole and goes into the barrel of the gun for cleaning.

—Anne Cicero, *St. Jacob*

The three-part rod was used for cleaning the barrel of either a shotgun or a rifle. Cleaning was accomplished at the end of a hunt. Guns were not put away without cleaning.

—Ruth Ann Sparkman, *Pocahontas*



Pictured in your June 2021 *Who-What-Where* challenge is an antique gun cleaning rod (BGI Company patent February 9, 1892). BGI Company was founded by Marcellus Hartley in February of 1878 in Bridgeport Connecticut. Until Hartley's death in 1892, BGI manufactured gun implements such as loading tools, cleaning tools, shell extractors and powder measures for old style guns and later other sporting articles to include duck and turkey calls, whistles and other breech-loader accessories.

—Bill Malec, *O'Fallon, Ill.*

Pictured is a cleaning rod for a shot gun. Made of wood and brass these materials are soft and less likely to disfigure the shotgun bore when pushed or pulled through the shotgun barrel.

The clue is the loop at the end opposite the handle. Once in the barrel, a cleaning patch is pulled half way through the brass loop, and cleaning solvent is applied to the patch (laymen would call the *patch* a piece of expendable rag). Normally when pulled through the barrel with the treated patch, unburnt powder and lead build-up are removed.

Most folks don't realize that lead (Pb) is not used today for shotgun shot. It has been replaced by steel, since lead pollutes wildlife areas.

—Corey Rabe, *Southern Wilberton Township, Fayette County*

The picture on page 23 is a gun cleaning rod. I have one and have sold a lot of them at auction.

—Tom Roniger, *Greenville*

The item pictured in the June issue is a ramrod for use in cleaning guns. I've never used one, but my husband does. The hole on the end holds a cleaning patch.

—Debbie Johnson, *Ramsey*

Who-What-Where is a contest that challenges your knowledge of people, places and objects in and around Southwestern Electric Cooperative's service area. Here's how it works: Each month, we run a photo. Your job is to tell us who's pictured, what we've photographed, or where we shot the photo. You can email your response to joe.richardson@sweci.com or send it by mail to Joe Richardson, Southwestern Electric Cooperative, 525 U.S. Route 40, Greenville, IL 62246. Please include your name, mailing address, and hometown. If you have a story about our photo topic, include that as well—we love these! The puzzle solution—possibly accompanied by a few words from you—will appear in a future issue of *The Southwestern*.

WHERE ARE WE?



CO-OP KITCHEN

Sides of Summer

Quick Caprese Salad

QUICK CAPRESE SALAD

Ingredients

- 3 tomatoes sliced
- 1 pound mozzarella slices (fresh or wet)
- ½ cup Italian dressing
- 1 tablespoon fresh basil chopped

Directions

1. Layer sliced tomatoes and mozzarella slices.
2. Drizzle Italian dressing and sprinkle basil over each layer.
3. Refrigerate at least one hour before serving.

CUCUMBER SALAD

Ingredients

- 1 cup sour cream
- ⅔ cup sugar
- ½ cup vinegar
- 2 teaspoons salt
- ½ teaspoon pepper
- 5 large cucumbers peeled and sliced
- 1 onion sliced

Directions

1. Combine first five ingredients and pour over cucumbers and onion.
2. Chill before serving.

CALICO BEAN SALAD

Ingredients

- 1 can green beans drained
- 1 can yellow wax beans drained
- 1 can kidney beans drained
- ½ cup green pepper minced
- ½ cup green onion minced

Marinade Ingredients

- ½ cup salad oil
- ½ cup vinegar
- ¾ cup sugar
- 1 teaspoon salt
- ⅛ teaspoon pepper

Directions

1. Mix vegetables together in large bowl.
2. Heat and stir together marinade ingredients until sugar is dissolved.
3. Pour marinade over bean mixture, mix gently, and chill overnight.

CUCUMBER TEA SANDWICHES

Ingredients

- 8 ounces cream cheese softened
- ¼ cup mayonnaise
- 1 tablespoon fresh dill snipped
- 1 tablespoon lemon juice
- ½ teaspoon Worcestershire sauce
- ¼ teaspoon salt
- ⅛ teaspoon cayenne pepper
- ⅛ teaspoon pepper
- 2 large cucumbers seeded and chopped
- ½ cup sweet red pepper chopped
- ¼ cup onion chopped
- ¼ cup fresh parsley minced
- 12 slices whole wheat bread

Directions

1. Combine first eight ingredients and beat until blended.
2. Stir in cucumbers, red pepper, onion, and parsley.
3. Cover and refrigerate for about two hours.
4. Remove crusts from bread and cut each slice into 4 triangles.
5. Spread on cream cheese mixture.
6. Garnish with thin cucumber slices and dill sprigs if desired.

Edwardsville Garden Club's *Favorite Recipes* (cucumber tea sandwiches, quick caprese salad, and calico bean salad) and Fayette County Museum *35th Anniversary Cookbook* (cucumber salad).

CURRENT EVENTS

Editor's Note: What used to be a simple decision — stay in or venture out — COVID has complicated. The odds of getting sick, of making someone else sick, of shrugging off the virus or dying from it, vary from person to person, place to place, day to day. They change with chance and circumstance, and with caution and conscious decision.

Conditions are constantly changing. Stay informed. When you visit public places and events, take precautions. Follow state, local and CDC guidelines. When appropriate, wear a mask and engage in social distancing. Wash your hands thoroughly before you leave home and again when you return. Keep hand sanitizer in your car or on your person.

And stay home if you're sick.

Regardless of how you spend your time, please be mindful of your health and the well-being of those around you. Stay healthy and stay safe.

September 10 CONCERT IN THE PARK, Litchfield. Bring a lawn chair and enjoy a live performance by Big Shake Daddies. Walton Park, 10207 Niemanville Trail. 6:30 - 9:30 p.m. Admission is free. Call (217) 324-9075 or e-mail parkdist@litchfieldil.com.

September 10-12 HOMESTEAD HARVEST DAYS, Highland. Over the past three decades the show has grown from farmers working the fields around the Louis Latzer Homestead to a celebration of local and state history. Not only are tractors and farm machinery from through the years on display and in action, but the show also includes living history groups, craft vendors, artisans, great food, kids activities, and much more! Friday 7:30 a.m. - 3 p.m., admission \$3; Saturday and Sunday 7:30 a.m. - 5 p.m., admission \$5. Email homesteadharvestdays@gmail.com, call (618) 654-7957 or visit highlandilhistory.org.

September 10-12 INTERNATIONAL GEM & JEWELRY SHOW, Collinsville. Shop directly from designers, wholesalers and manufacturers. Friday noon - 6 p.m.; Saturday 10 a.m. - 6 p.m.; Sunday 11 a.m. - 5 p.m. Tickets are good for all three days: \$6 online credit card only; \$8 at the show

cash only; free admission to all active duty military with current military identification (includes immediate family). Gateway Center, One Gateway Drive. To purchase tickets, visit intergem.com.

September 10-12 REMOTE CONTROL (RC) JET RALLY, Litchfield. There will be approximately 30 contestants and 50 aircraft from all over the United States including scale models of military jets and high performance sport jets. 9 a.m. - 5 p.m. Adults \$5; children 15 years of age and younger are free. Litchfield Illinois Municipal Airport, 1201 US Route 66 South. Call (217) 899-4679 or visit airport.litchfieldil.com.

September 10-19 ALTON LITTLE THEATER: GLORIA'S GUY, Alton. A theatrical presentation by the Alton Little Theater Company. Thursday - Saturday at 7:30 p.m.; Sunday at 2 p.m. Alton Little Theater, 2450 North Henry Street. For tickets, call (618) 462-3205 or visit altonlittletheater.org.

September 11 CONCERT IN THE PARK, Maryville. Troy Community Band will perform. The band consists of more than 30 members from local communities. Bring your lawn chairs and enjoy the evening with a variety of marches,

show tunes, and contemporary music. Kettle corn and drinks will be available for purchase. 7 p.m. Firemen's Park, 300 North Donk Avenue (Route 159).

Additional parking is available at Mother of Perpetual Help Church east of the park. Visit vil.maryville.il.us or call (618) 772-8555.

September 11 KICKS ON 66 CAR SHOW & CRUISE, Edwardsville. Cars of all makes, models and colors will be on display. 11 a.m. - 2 p.m. Admission is \$10. Children 10 years of age and younger, veterans, and first responders are free. Legion Hall, 2525 South State Route 157. Visit kickson66.org.

September 11 SOUTHWESTERN ELECTRIC COOPERATIVE'S 83rd ANNUAL MEETING OF MEMBERS, Greenville. Voting available 9 a.m. - 10 a.m. at the Bond County Fairgrounds and St. Jacob and St. Elmo warehouses. Business meeting begins at 10 a.m. For more information see page 6 of this magazine, visit sweci.com or call 800-637-8667.

September 11 WHEN I'M 64 BEATLES MUSIC FESTIVAL, Worden. Experience a one-of-a-kind music festival with a full day of all things Beatles featuring seven bands. Event will also include food trucks and an artisans market. Proceeds to benefit Unity Lutheran School

in East St. Louis. Prairietown Fireman's Hall, 8451 Washington Street. Noon - 9 p.m. Call (618) 874-6605 or visit us on facebook.

September 12; October 10 PICKER'S MARKET, Litchfield. All items sold at this market are prior to 1980 including antiques, collectibles, vintage items, upcycled items, and refurbished items. Event includes food booths and live music. 9 a.m. - 3 p.m. Admission is free. Downtown Litchfield, 400 North State Street. For more information, go to visitlitchfield.com.

September 17 & 18 ART FAIR, Staunton. See one-of-a-kind pieces of artwork from dozens of makers and artists while enjoying fantastic music and delicious food. Attend during the day on Saturday for demonstrations and family activities. Friday 5 - 10 p.m. Saturday 10 a.m. - 5 p.m. 205 North Union Street. Call (618) 635-2015.

September 17 & 18 ITALIAN FEST, Collinsville. Come celebrate the Italian culture and heritage that the city was built on with food, drinks, live music, and family fun. Friday 11 a.m. - 10 p.m. Saturday 10 a.m. - 10 p.m. Admission is free. 221 West Main Street. Call (618) 344-2884 or visit italianfest.net.

September 17 & 18 OKTOBERFEST, Belleville. Enjoy three stages of live entertain-

Call to Confirm

Listings are provided by event organizers or taken from community websites. We recommend calling to confirm dates, times and details before you make plans. All are subject to change.

Submissions

To submit an event for consideration in our calendar, email your event information to joe.richardson@sweci.com, or mail your info to *The Southwestern*, Southwestern Electric Cooperative, 525 US Route 40, Greenville, IL 62246. Please use our Current Events format (as seen on these pages) to write your submission. Include a contact number or email and submit your listing at least two months prior to your event.

ment, German cuisine and beer, cornhole tournament, classic car show, wiener dog race and costume contest, and a children's area for the youngsters to enjoy, complete with rides, shaved ice and cotton candy. 11 a.m. - 11 p.m. Downtown Public Square, Main Street and Illinois Street. Visit bellevilleoktoberfest.com.

September 17-19 HILL'S FORT RENDEZVOUS,

Greenville. Re-enactments, traders, beautiful scenery, live music, guided tours and demonstrations will give you a glimpse into the vibrant cultural heritage and tradition of the Greenville community. Celebrate those who bravely came before. Noon - 11 p.m. American Farm Heritage Museum, 1395 Museum Ave. Visit hillsfort.org.

September 17- 9 SUMMER SUNDOWN MUSIC FESTIVAL, Effingham. More than 36 artists will perform. The festival's mission is to bring together the music makers and music lovers of Central Illinois to celebrate the rich and eclectic music scene that thrives in our region. Event will feature songwriter circles, a youth showcase, campfire jams, local food and craft vendors, swimming, yoga sessions and camping. Weekend pass is \$70 until September 16 and \$80 at the gate. 10 a.m. - midnight. Larson's Landing, 8724 East Marine Road. Visit summersundownfest.com.

September 17-October 31 GREAT GODFREY CORN MAZE, Godfrey. This year will feature a circus themed corn maze. The five-acre maze will be open on Fridays 6 - 10 p.m., Saturdays 11 a.m. - 10 p.m., and Sundays noon - 6 p.m. The two-acre "Haunted Maze" will be open on Fridays and Saturdays in October 7:30 - 10 p.m. Twelve years of age and above \$7, children six to eleven years of age \$5, children five years of age and younger are free. Robert E. Glazebrook Park, 1401 Stamper Lane. Visit godfreyil.org.



September 18 DUELING PIANOS, Maryville. River Bend Dueling Pianos featuring Charlie Brockus and Ian Taul will perform. Bring your lawn chairs and come with your requests. Kettle corn and drinks will be available for purchase. 7 - 8:30 p.m. Firemen's Park, 300 North Donk Avenue (Route 159). Additional parking is available at Mother of Perpetual Help Church east of the park. Visit www.vil.maryville.il.us or call (618) 772-8555.

September 18 STREET ART FEST, Highland. Watch as talented artists create artwork of amazing color, depth and complexity with chalk. Children ages 5-15 can register the day of the event for a square to complete their own work of art which will be judged by the Street Art judges. There will be lots of food choices and beverages, beer tasting, music, bags tournament, vendor fair and makers market, and a Kreative Kids Korner. 11 a.m. - 7 p.m. Downtown Square, 948 Main Street. Call (618) 654-3721 or visit highlandillinois.com.

September 18 WINE ON THE LAWN, Altamont. Enjoy Illinois wines, beer and live music. For a donation, guests receive a commemorative wine glass and samples of wine and beer. Noon - 8 p.m. Dr. Charles M. Wright House, 509 North Main Street. Call (618) 483-6178 or visit wrightmansion.org.

September 19 APPLE FESTIVAL, Grafton. Festivities include apple wine tasting, warm apple pie, crafts, live music, fresh produce, kids' activities, and

September 18 PAWS IN THE PARK, Greenville. Festival will include pet costume parade, pet contest trophies and ribbons, giveaways, food, professional photos, nail trimming, cutest pet photo voting, tennis ball drop for dollars raffle, SAR K9 CO-OP (a K9 based search and rescue team), silent auction, pet related vendors, microchipping clinic, and adoptable dogs. Event held rain or shine. 10 a.m. - 3 p.m. Park admission is free. Proceeds benefit Bond County Humane Society. Donations are tax deductible. Patriot's Park, northwest of Greenville at junction of Illinois Routes 127 and 140. Call 618-664-4068 or email Rachel at bchs4pets@sbcglobal.net. To pre-register (optional) for events, visit bit.ly/bondcohs.

delicious restaurant favorites. An apple pie walk (similar to a cake walk) will be held at 12:30 p.m. Bring your own pumpkin or purchase one to decorate and take part in the pumpkin roll at 2 p.m. Second and third place participants will win gift certificates for the restaurant and the fastest pumpkin will win a free nights stay at our historic lodge. 11 a.m. - 3 p.m. Admission is free. Pere Marquette Lodge & Conference Center, 13653 Lodge Blvd. Call (618) 786-2331 or visit pmlodge.net.

September 24 & 25 HOT AIR BALLOONS OVER MARINE, Marine. Watch colorful balloons float above the town. See launches on Friday and Saturday evenings, a sunrise launch on Saturday morning, and a balloon glow on Saturday evening. There will be many aviation activities and displays for attendees to enjoy, food, drinks, bounce house, games, and a kids movie at dusk. 155 North Duncan Street. 6:30 - 11 p.m. Call (618) 972-4435 or visit bomarine.org.

September 24-26 ART FAIR, Edwardsville. A juried fine art show featuring the works of approximately 65 artists, local food and drink. Family friendly event provides the opportunity to see, make, and buy art. Friday 5 - 9 p.m.; Saturday 11 a.m. - 9 p.m.; Sunday 11 a.m. - 3 p.m. City Park, 101 South Buchanan. Call (618) 655-0337 or visit edwardsvilleartcenter.com.

September 24-26 LOG CABIN VILLAGE FALL FESTIVAL,

Kinmundy. Stroll through the quiet wooded village, visit pre-Civil War cabins complete with re-enactors demonstrating pioneer life, and shop at your favorite vendors. 10 a.m. - 5 p.m. 6260 Gesell Road. Call (618) 267-2227 or visit kinmundylogcabinvillage.com.

September 25 CRAFT AND VENDOR EVENT, Mulberry Grove. There will be vendors and lunch. Proceeds will benefit Christmas gifts for those in need. 10 a.m. - 3 p.m. American Legion Post 1180, 203 Colburn Drive. Call (618) 780-2669.

September 25 & 26 AMERICAN INDIAN & ETHNOGRAPHIC SHOW, Collinsville. Saturday 8 a.m. - 5 p.m.; Sunday 8 a.m. - 2 p.m. Admission is free. Gateway Center, One Gateway Drive. Call (800) 289-2388 or visit gatewaycenter.com.

September 28 CONCERT IN THE PARK, Maryville. River Bend Dueling Pianos will perform. 7 p.m. Firemen's Park, 300 North Donk Avenue (Route 159). Visit www.vil.maryville.il.us or call (618) 772-8555.

October 1 & 2 ARTWALK, ARTRUN, & APPLE DAY, Greenville. Event will feature street food, beer and wine, live music, art, vendors, and maker's fair. Friday 6 - 10 p.m. Saturday 7 a.m. - 9 p.m. Admission is free. Downtown on the square. Visit greenvilleil-illinois.com.

October 1-3 ARCHON 44, Collinsville. This highly regarded science fiction and



fantasy convention includes internationally known media guests, scientists, writers, artists, merchandise dealers, performers and a masquerade. Gateway Center, One Gateway Drive. Learn more or purchase tickets at archonstl.org.

October 1-10 SAVOR RESTAURANT WEEK, Edwardsville/ Glen Carbon. SAVOR is a salute to our community's restaurateurs, cuisine and diners, and a celebration of the culinary creations that make our region a foodie hot spot. This is an opportunity for diners to visit old favorites and also try the many new restaurants that have opened in our market. Specially priced lunch and dinner menus are offered for fixed prices. For more information and a list of participating restaurants, visit edglenchamber.com.

October 1-31 MOURNING COL. STEPHENSON, Edwardsville. Learn about the mourning customs of early America. Each room of Stephenson's federal style home portrays a different aspect of the days leading up to and following the colonel's untimely death in 1822. Guests begin

their tour in our parlor which depicts the house in full mourning as the room would have looked during the colonel's funeral. Learn about early American medical practices and how families cared for the sick and dying in an era before modern medicine. Uncover the mysteries surrounding the colonel's death and the aftermath for his young widow and orphaned children. Colonel Benjamin Stephenson House, 409 S. Buchanan Street. Call (618) 692-1818 or visit stephensonhouse.org.

October 2 BURN OUT IN THE BURG, Strasburg. Event features an auto show for 1925 - 2021 vehicles with burn out competition, exhaust competition, and hourly raffles. Custom car part trophies awarded to winners. Registration 10 - 11:30 a.m.; show 11 a.m. - 3 p.m. \$10 entry fee per event. Village Park, Commercial Street. Find us on facebook or call (271) 644-3209 or (217) 343-5686.

October 2 FALL FESTIVAL, Lebanon. The festival features music, food and gift ideas. 9 a.m. - 4 p.m. West St. Louis Street. Visit lebanonil.us.

October 2 OWL PROWL AT BREMER SANCTUARY, Hillsboro. Tree House Wildlife Rehabilitation Center will provide an informative program featuring resident live owls. The organization will then release a rehabilitated owl into the sanctuary. Beginning near dusk, owl calls will be showcased throughout the west prairie in an attempt to lure a response. Guests should bring their own hot dogs, buns, a dish or two to share, lawn chairs, and bug spray. Water will be provided. 4 - 8 p.m. The H & B Bremer Wildlife Sanctuary, 194 Bremer Lane. Visit bremersanctuary.org.

October 2 WALK TO END ALZHEIMER'S, Belleville. The route length is 2 miles. Walk to End Alzheimer's is full of flowers, each carried by someone committed to raising funds and awareness for a breakthrough

October 17 LECLAIRE PARKFEST, Edwardsville. The event offers music, a wine and beer garden, and a wide variety of delicious festival food. Local artisans and crafters will have their work on display and available for purchase. The festival features games, pet adoptions, vintage cars and tractors and other activities. Our book sale offers thousands of books at bargain prices. Exhibits of historic photos and narrated trolley tours will tell the unique story of the LeClaire. Noon - 5 p.m. Admission is free. LeClaire Lake Park, 800 Block of Hale Avenue. Call (618) 656-1294 or visit historic-leclaire.org.



in the fight against Alzheimer's and all other dementia. All funds are used to further the care, support and research efforts of the Alzheimer's Association which is a nonprofit 501(c)3 organization. All donations are tax-deductible as allowed by law. Registration at 9 a.m.; ceremony at 10 a.m. walk at 10:20 a.m. Southwestern Illinois College, 2500 Carlyle Ave. For more information or to register, visit alz.org/walk.

October 5 BACH TO THE FUTURE, Lebanon. Bach, Beethoven, Mozart and other classics performed in exciting new ways like modern jazz, African and Latin rhythms. This show brings an exciting, whimsical approach to the most beloved music of all time and features interesting, cutting-edge instruments. 7:30 p.m. Adult \$25; senior \$23; student/child \$10; McKendree University students free. The Hett Center for the Arts, 400 North Alton Street. Call (618) 537-6863 or visit thehett.com.

October 8 & 9 CHILI COOK-OFF, Belleville. Features the culinary creations of individuals, local organizations and area businesses. Attendees are

invited to vote in the People's Choice contest for their favorite chili for \$1 per vote. 100% of the proceeds are donated to the Community Interfaith Food Pantry in Belleville. 11 a.m. - 10:30 p.m. Downtown on East Main Street. Visit bellevillechili.com.

October 8-10, 15-17 MOON OVER BUFFALO, Breeze. A theatrical presentation by Clinton County Showcase. All performances begin at 8 p.m. except for the last Sunday showing, which is at 2 p.m. \$12 for adults; \$10 for students, senior citizens and active military personnel (with valid identification). Historic Avon Theatre, 535 North 2nd Street. For reservations, call (618) 526-2866 or visit clintoncountyshowcase.com.

October 9 ART, WINE, & MUSIC FESTIVAL, Centralia. Local artisans, musicians, crafters, wineries, craft brewers, and food vendors downtown Broadway Street between Poplar and Elm streets and surrounding the area of the Centralia Carillon. 4 - 10 p.m. Admission is free. Call (618) 533-7623 or visit celebratecentralia.com.



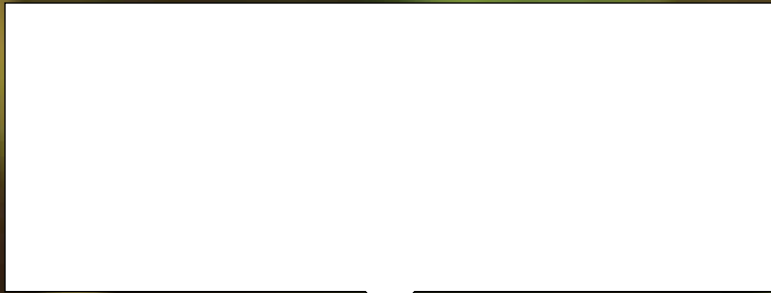
October 2, 3, 9, & 10 VINTAGE VOICES, Alton. Step back in time on these guided, gentle-walking tours and meet a controversial publisher, war heroes, and prominent persons from Alton's rich history portrayed by local actors. Noon - 2:30 p.m. Tours will leave from the main gate of the City Cemetery at 5th and Vine Streets. Call (618) 531-6641.

Attending an event? Please observe CDC and local health and safety guidelines. Be mindful of your health and the well-being of those around you.

A relic of days gone by stands on South Main Street in Findlay, Ill.



THE FINAL FRAME



Southwestern
Electric Cooperative, Inc.
Your Touchstone Energy® Cooperative 

